



BRIDAL

Lookbook

INSTILBeauty

WELCOME TO THE INSTIL BEAUTY *lookbook*

CREATED TO GIVE YOU INSPIRATION AND HELP YOU
DECIDE ON WHAT STYLE YOU WOULD LIKE TO TRY
DURING YOUR MAKEUP TRIAL.

THIS LOOK BOOK SHOWCASES THREE OF THE MAIN
TYPES OF BRIDAL MAKEUP THAT HAVE BEEN REQUESTED
OVER YEARS OF A SPECIALIST BRIDAL MAKEUP ARTIST.

Enjoy, Casey



To instil confidence by enhancing natural beauty'

INSTIL *Beauty*

NATURAL

notes

Key Beauty Notes

WARM GOLDS, BROWNS AND SOFT ORANGE TONES

Characteristics of this look

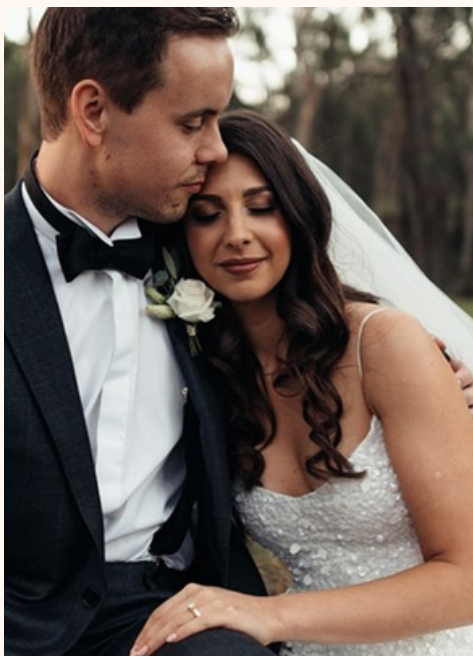
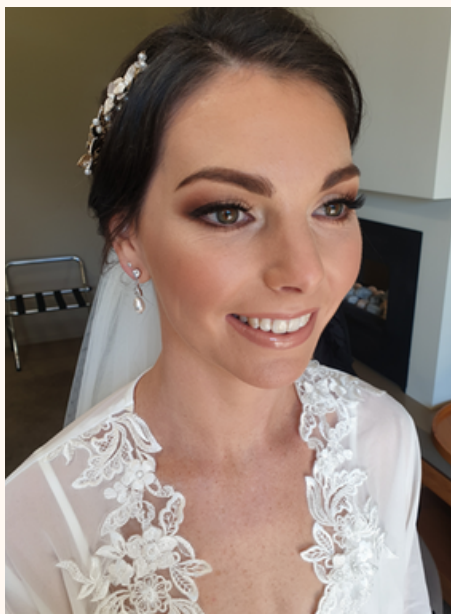
- SMOKEY BROWN LINER ON THE TOP OF YOUR LASH LINE + INDIVIDUAL LASHES
- CREAMY-LINER SHADE ON THE BOTTOM WATERLINE TO MAKE THE EYES APPEAR FRESH AND BRIGHT
- FLAWLESS AND SEAMLESS BASE WITHOUT IT BEING TOO FULL OR CAKEY.
- THE BROWS CAN BE FLUFFY AND NATURAL, OR A BIT MORE DEFINED, BUT LESS IS MORE
- ALL ELEMENTS WILL BE BLENDED OUT AND SOFT
- BRONZED, PERFECTED AND UNDERSTATED

Complimentary theme

- WOULD SUIT ANY BEACH, COUNTRY, NATURE, RUSTIC OR WINERY WEDDING.
- HAIR WOULD BE IN A SOFT WAVE WITH LOTS OF MOVEMENT, AND SHOWSTOPPING IN A GRACE LOVES LACE STYLE DRESS

NATURAL

Inspo



CLASSIC

notes

Key Beauty Notes

MAUVE, SOFT PINK AND COOL BROWN HUES

Characteristics of this look

CRISP, CLEAN BLACK LINER ON THE TOP WITH A GOOD PAIR OF LASHES; THESE TWO ELEMENTS ARE THE HERO OF THIS LOOK, AND THE MAUVE, PINK AND COOL BROWN SHADES CREATE DEPTH AND SOFTNESS

·A WHITE LINER WILL BE APPLIED ON THE BOTTOM WATERLINE TO ADD THE FINISHING TOUCHES ON THE EYES

·FULL-COVERAGE BASE, PINK BLUSH, AND A MATTE SUBTLE PINK LIPSTICK

Complimentary theme

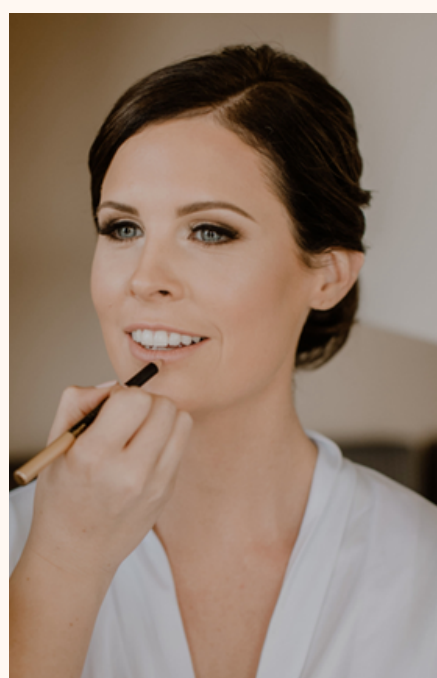
THIS IS A NO EXPENSE SPARED WEDDING; THE CANDELABRAS, CENTER PIECES, THE CHAPEL AND VENUE IS EXQUISITE, THE DRESS IS COUTURE.

HAIR CAN BE A SLEEK UPDO, A HALF UP/DOWN STYLE WITH SOME VOLUME, OR A HOLLYWOOD WAVE WITH ONE SIDE PINNED.

THINK "LE MONTAGE + DOLTON HOUSE + CURZON HALL FOR VENUES, AND VELANI, VERA WANG + STEPHEN KHALI FOR COUTURE.

CLASSIC

Inspo



FULL GLAM

notes

Key Beauty Notes

DARK BROWNS, MAROONS AND BLACK

Characteristics of this look

- THE EYES ARE SMOKED OUT WITH DARK SHADOW AND HAS A STRIP LASH
- A BLACK OR BROWN LINER IS USUALLY USED ON THE LOWER WATERLINE/LASH LINE
- BROWS ARE PERFECTLY SHAPED
- BASE WILL BE FULL-COVERAGE WITH THE PERFECT AMOUNT OF CONTOURING. THE UNDEREYE AREA IS HIGHLIGHTED WELL
- THE LIPS ARE USUALLY A NUDE OR NUDE-PINK

Complimentary theme

- THIS VENUE IS NOT TRADITIONAL OR RUSTIC; ITS USUALLY A VENUE THAT IS IN BETWEEN THE TWO.
- BLACK, CREAM OR A NEUTRAL COLOUR PALETTE ARE USUALLY FEATURED WITH THIS LOOK. HAIR WOULD BE A EXAGGERATED BUN, OR TIGHT HOLLYWOOD WAVES

FULL GLAM

Inspo





WWW.INSTILBEAUTY.COM.AU

@INSTILBEAUTY

0413 691 143

INSTIL*Beauty*